

Kilimanjaro



Tommy Bahama
HOME



Kilimanjaro

Inspired by the legacy of British Expeditions to the world's most fascinating destinations, Kilimanjaro, from Tommy Bahama Home, blends traditional designs with indigenous styling, unique materials and artisan craftsmanship for a look that reflects the lifestyle of a sophisticated collector.

Soft corners with inset posts suggest a casual interpretation of traditional style, while hand carvings, raised panel moldings, breakfront profiles and graceful turnings reinforce the heritage of British style.

Designs are crafted from aged Mahogany in a rich Tangier finish with authentic hammered copper accents in a warm burnished patina.

The essence of today's traditional design takes a more casual approach to the interpretation of classic elements...much the same as British Expeditionary styling did in the 19th Century. The look is inviting and comfortable, the styling is refined yet eclectic, and the layering of pattern, texture and color draw the eye to a look that is uniquely Tommy Bahama.



Tommy Bahama
HOME

Bedroom 4 | Dining Room 14 | Living Room 26 | Visual Index 58

Bedroom

The sophisticated turnings on the posts of the Candaleria bed make a grand statement for the master suite, capped by a removable metal canopy in an aged iron finish. The graceful arched headboard features Cathedral Mahogany framed by crown molding for a distinctive look.



552-174C Candaleria Poster Bed, King
81.75W x 90.5L x 92.75H in.

552-624 Valhalla Bachelor's Chest
44.25W x 19.25D x 36H in.

4011-1095-200171
Henry Link Trading Co.
Xavier Bench
22W x 19D x 19.75H in.



The Candalaria bed offers four distinct configurations, including a removable canopy and high and low post options. Shown above is the high/low post combination. The opposite page features the high post version without the canopy. Shown in the visual index is the low post configuration, which comes with larger finials.

552-174C Candalaria Poster Bed, King
81.75W x 90.5L x 92.75H in.

552-624 Valhalla Bachelor's Chest
44.25W x 19.25D x 36H in.





552-307 Vickers Chest
50.25W x 20.5D x 55.25H in.

552-624 Valhalla Bachelor's Chest
44.25W x 19.25D x 36H in.

The Valhalla bachelor's chest is the largest of the three nightstands in the collection. It features an elegant combination of custom teardrop pulls on the upper drawers and decorative bar pulls on the lower drawers.





The design of the Barcelona upholstered bed offers remarkable detail, from intricate hand carving on the crown of the headboard to smart tailoring on upholstered panels trimmed with decorative nails. The bed is available exclusively in the Clarendon fabric as shown.

552-134C Barcelona Panel Bed, King
83W x 90.5L x 68.5H in.

552-621 Newland Nightstand
32.25W x 19.25D x 32H in.

1667-11 San Carlos Chair
31W x 36.5D x 37H in.





552-622 Christiana Nightstand
25W x 18D x 30.5H in.



552-621 Newland Nightstand
32.25W x 19.25D x 32H in.

552-205 Landsdowne
Landscape Mirror
51W x 36H in.

552-233 Pennington Dresser
70.25W x 20.5D x 42.75H in.

In addition to the Valhalla bachelor's chest on page 9, the collection offers the Christiana and Newland nightstands as perfect compliments for smaller bedrooms. The 9-drawer Pennington dresser has a center drop-down media drawer for electronics, along with wire management grommets and the ability to incorporate the Sligh StrongArm® TV mounting system. Please see the visual index for details.



Dining Room

The interplay of light and dark is a hallmark of new traditional style, beautifully exemplified here.

The Expedition dining table, with its carved trestle base, extends to ten feet with two leaves, comfortably accommodating parties of the same number. The Cape Verde upholstered chairs showcase remarkable tailoring, available in custom fabrics.

552-877C Expedition
Rectangular Dining Table
120W x 46D x 30H in.
Shown with two 18 inch leaves

552-880-01 Cape Verde
Upholstered Side Chair
20.25W x 27.5D x 41.5H in.

552-881-01 Cape Verde
Upholstered Arm Chair
26.25W x 29.25D x 41.5H in.



552-877C Expedition Rectangular Dining Table
84W x 46D x 30H in.
Extends to 120 inches with two 18-inch leaves

552-880-01 Cape Verde Upholstered Side Chair
20.25W x 27.5D x 41.5H in.

552-881-01 Cape Verde Upholstered Arm Chair
26.25W x 29.25D x 41.5H in.



The stately lines of the Cape Verde dining chair make it a statement piece, with distinctive turnings on the front legs, gracefully shaped arms, double rows of nailhead trim and the option to customize each upholstered area in any fabric. The design is also available in leather and in fabric/leather combinations as the Jacqueline chair, shown on pages 18 and 50. The expression of personal style begins with choice and ends with a room that is uniquely yours.





The Senegal buffet features intricately carved doors framing signature custom hardware. Three serving inserts in the top are made of authentic hammered copper with a warm burnished patina. Three full-extension drawers are felt-lined, with the middle one divided for silver storage. The Helena mirror repeats the hammered copper theme with custom inserts around its perimeter.

552-201 Helena Round Mirror
44.25 inch diameter

552-852 Senegal Buffet
72.25W x 20.25D x 39H in.

LL1210-12 Jacqueline Leather Hostess Dining Chair
20.25W x 27.5D x 41.5H in.

LL1210-13 Jacqueline Leather Host Dining Chair
26.25W x 29.25D x 41.5H in.





552-875C Maracaibo
Round Dining Table
60 diameter x 30H in.

552-881 Cape Verde
Upholstered Arm Chair
26.25W x 29.25D x 41.5H in.



The Maracaibo dining table, shown here without the standard 22" leaf, features a magnificent octagonal carved urn pedestal base. The top design is radial-matched Cathedral Mahogany with Quartered Mahogany borders defined by an ebony line.





552-875C Maracaibo Round Dining Table
82W x 30H in.
Shown with one 22-inch leaf

552-881-01 Cape Verde Upholstered Arm Chair
26.25W x 29.25D x 41.5H in.

552-880-01 Cape Verde Upholstered Side Chair
20.25W x 27.5D x 41.5H in.



552-201 Helena Round Mirror
44.25 inch diameter

552-966 Mossel Bay Console Table
68W x 20.25D x 32.25H in.

552-201 Helena Round Mirror
44.25 inch diameter

552-869 Cipriana Sideboard
72W x 21D x 37H in.



The Cipriana sideboard blends dramatic styling with functionality for entertaining. The breakfront profile harkens back to classic British design, as does the dentil molding and generous turned legs. The top serving surfaces are authentic hammered copper with a rich burnished finish. Both center drawers are felt lined, with the upper drawer divided for silver storage. There is one adjustable shelf behind each door and ample open storage on the stationary shelf at the base.



Living Room

Great interior design is born of a rich layering of color, texture and materials. Here, natural earth tones compliment the fresh wall color and linen white trim. Textures include velvet, chenilles and tufted leather. Materials feature Mahogany, aged metal and hammered copper. The look is refined, comfortable and irresistibly inviting.

552-951 Queenstown Round Accent Table
16 diameter x 23H in.

1764-33 Hewett Sofa
91.5W x 42D x 42H in.

552-943 Monrovia Octagonal Cocktail Table
50W x 50D x 19.5H in.

LL7932-11 Acappella Leather Chair
30.5W x 37D x 38.5H in.





1764-33 Hewett Sofa
91.5W x 42D x 42H in.

552-943 Monrovia Octagonal Cocktail Table
50W x 50D x 19.5H in.

LL7932-11 Acappella Leather Chair
30.5W x 37D x 38.5H in.

The Monrovia octagonal cocktail table features a 16-piece radial matched Mahogany top surrounded by a perimeter of dentil molding below the rim and panel molding beneath that. The legs and base stretcher are crafted in metal with a distinctive aged iron finish.





LL7900-44 Heather Leather Cocktail Ottoman
49W x 49D x 21H in.

7998-33 Riversdale Sofa
98W x 42.5D x 35H in.

1761-11 Hamilton Chair
41W x 40D x 38.5H in.

The Heather cocktail ottoman, available in both fabric and leather, features a removable wooden serving tray in the center with a hammered antique copper base. The area beneath the tray is fully upholstered. A button-tufted seating area is surrounded by a perimeter of nailhead trim and supported by eight elegantly turned legs.





7998-33 Riversdale Sofa
98W x 42.5D x 35H in.

LL7900-44 Heather Leather Cocktail Ottoman
49W x 49D x 21H in.

552-205 Landsdowne Landscape Mirror
36W x 51H in.

552-966 Mossel Bay Console Table
68W x 20.25D x 32.25H in.

7204-11 Marissa Wing Chair
36W x 38D x 44H in.

The Mossel Bay console functions as a dramatic entry piece, a sofa table or the focal point of a living room as shown here. The canted corners are highlighted by dentil molding beneath the top and distinctive turned legs supported by a stationary shelf below.





7900-44 Heather Cocktail Ottoman
49W x 49D x 21H in.

7998-33-01 Riversdale Leather Sofa
98W x 42.5D x 35H in.
Pillows shown are sold separately

7274-11 Bishop Chair
33W x 38.5D x 36H in.
Pillow shown is sold separately

The fabric version of the Heather cocktail ottoman is shown here in a great animal skin pattern in chenille. Note the detail to the right showing the fully upholstered area beneath the removable wooden tray with hammered antique copper base.



7274-11 Bishop Chair
33W x 38.5D x 36H in.
Pillow shown is sold separately

7274-44 Bishop Ottoman
27.5W x 22D x 19H in.



7998-33-01 Riversdale Leather Sofa
98W x 42.5D x 35H in.

552-955 Tunis Box-on-Stand
18.75W x 23.75D x 25H in.

The Tunis box-on-stand offers the unique touch of hammered copper drawer fronts, framed with decorative nailhead trim, giving the piece an unexpected glimmer of metal against wood.

7998-11 Riversdale Chair
46W x 41D x 35H in.



7275-33AA Amelia Sofa
86.5W x 40.5D x 36H in.
Shown with an additional pillow

552-947 Kirkwood
Rectangular Cocktail Table
56W x 36D x 16.75H in.

552-954 Siliana Triangle Table
27W x 23.75D x 24H in.

7204-11 Marissa Wing Chair
36W x 38D x 44H in.

552-952 Harcourt
Round Side Table
20 diameter x 24.5H in.





7275-33AA Amelia Sofa
86.5W x 40.5D x 36H in.

552-954 Siliana Triangle Table
27W x 23.75D x 24H in.



7275-11 Amelia Chair
36W x 40.5D x 36H in.

7275-44 Amelia Ottoman
30W x 22D x 19H in.

552-952 Harcourt Round Side Table
20 diameter x 24.5H in.

The Siliana triangle table is one of our favorites. The shape is intriguing and works beautifully as an end table or chairside table. With two shelves of storage beneath, it offers an equal measure of practicality.





7275-33 Amelia Sofa
86.5W x 40.5D x 36H in.

552-953 Carman End Table
22W x 25.25D x 24H in.

552-943 Monrovia
Octagonal Cocktail Table
50W x 50D x 19.5H in.

LL7274-11 Bishop Leather Chair
33W x 38.5D x 36H in.

7980-23-02 Sloane Leather Settee
64.5W x 36D x 35.75H in.



552-952 Harcourt Round Side Table
20 diameter x 24.5H in.

7980-23-02 Sloane Leather Settee
64.5W x 36D x 35.75H in.



The unique design of the Harcourt side table incorporates hammered copper around the perimeter accented with decorative nailhead trim. The reversible top conceals storage beneath and features hammered copper on one side and a chess board veneer pattern on the other side. Chess pieces are not included.





552-951 Queenstown Round Accent Table
16 diameter x 23H in.

1667-11 San Carlos Chair
31W x 36.5D x 37H in.



The Queenstown accent table combines a hammered copper top with a Mahogany rim and base, joined by a sculpted metal pedestal in an aged iron finish.

LL7958-44 Bahia Leather Ottoman
45W x 29.5D x 19.5H in.

1764-33 Hewett Sofa
91.5W x 42D x 42H in.

LL7932-11 Acappella Leather Chair
30.5W x 37D x 38.5H in.





1667-11 San Carlos Chair
31W x 36.5D x 37H in.



552-875C Maracaibo
Round Dining Table
60 diameter x 30H in.



LL1210-12 Jacqueline Leather Hostess Dining Chair
20.25W x 27.5D x 41.5H in.

552-624 Valhalla Bachelor's Chest
44.25W x 19.25D x 36H in.

The Cape Verde dining chairs, shown on page 14 in fabric, are also available in leather as the Jacqueline host and hostess chairs. Featured here in two designer combinations of fabric and leather, the seat, inside back and outside back can be fully customized. They also work beautifully as freestanding occasional chairs.



LL1210-13 Jacqueline
Leather Host Dining Chair
26.25W x 29.25D x 41.5H in.

552-966 Mossel Bay Console Table
68W x 20.25D x 32.25H in.



LL7275-11AA Amelia Leather Chair
36W x 40.5D x 36H in.

LL7275-44 Amelia Leather Ottoman
30W x 22D x 19H in.

552-952 Harcourt Round Side Table
20 diameter x 24.5H in.



7932-11 Acappella Chair
30.5W x 37D x 38.5H in.

552-951 Queenstown
Round Accent Table
16 diameter x 23H in.

7998-11-01 Riversdale Leather Chair
46W x 41D x 35H in.

7998-44-01 Riversdale Leather Ottoman
32.5W x 25.5D x 18.5H in.





552-950 Crawford Storage Lamp Table
23W x 27D x 24H in.

The Crawford lamp table offers generous concealed storage with one adjustable shelf behind an intricately carved door with custom hardware.

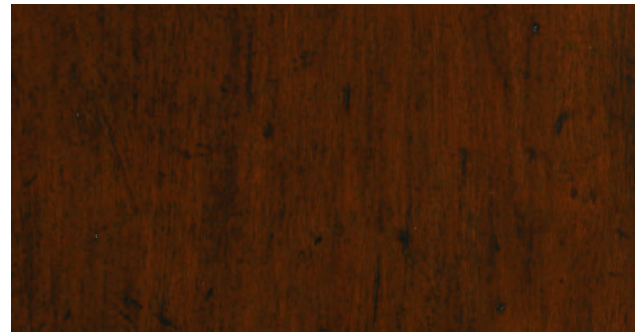


7876-11 Kent Chair
41W x 42.5D x 36.5H in.

552-953 Carman End Table
22W x 25.25D x 24H

7204-11 Marissa Wing Chair
36W x 38D x 44H in.





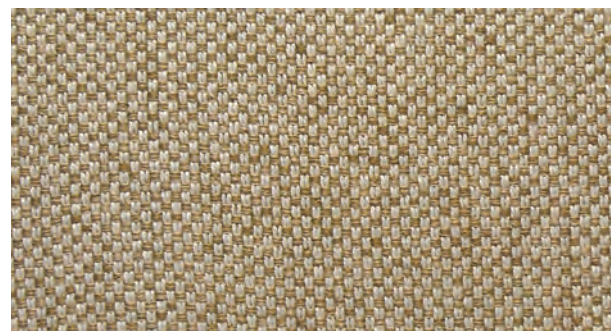
Finishes

Kilimanjaro is crafted from Mahogany solids and veneers and select hardwoods in a moderately distressed chestnut brown Tangier finish. Certain items feature authentic hammered copper surfaces finished with a warm burnished patina.



Custom Hardware

Kilimanjaro features an array of unique hardware designs, with a jeweler's detail, styled exclusively for the collection and finished in a burnished copper coloration.



Standard Fabric

Clarendon (#110211) is a woven linen pattern of 100% polyester in a winter wheat coloration, standard on the Cape Verde dining chairs and the Barcelona upholstered bed.

Dining Table Top Configurations



552-877C Expedition Rectangular Dining Table



552-877C Expedition Rectangular Dining Table
Shown with one 18 inch leaf



552-877C Expedition Rectangular Dining Table
Shown with two 18 inch leaves



552-875C Maracaibo Round Dining Table



552-875C Maracaibo Round Dining Table
Shown with one 22 inch leaf

BEDROOM



**552-133C Barcelona Panel Bed
5/0 Queen**

66.5W x 90.5L x 64.75H in.
Wood framed padded upholstered headboard, footboard and side rails with decorative nailhead trim. Intricate shell carving on headboard. Plinth base footboard on bun feet.
Available only in standard fabric 110211 Clarendon: A woven linen pattern in a winter wheat coloration
Headboard 66.5W x 64.75H in.
Footboard 66.5W x 21H in.
Overall length 90.5 in.
Bottom of side rails to floor 3.75 in.
Bottom of box springs to floor 9.75 in.
Consists of:
133HB Headboard
133FB Footboard
133SR Side Rails/Support 5/0 Queen

**552-134C Barcelona Panel Bed
6/6 King**

83W x 90.5L x 68.5H in.
Wood framed padded upholstered headboard, footboard and side rails with decorative nailhead trim. Intricate shell carving on headboard. Plinth base footboard on bun feet.
Available only in standard fabric 110211 Clarendon: A woven linen pattern in a winter wheat coloration
Headboard 83W x 68.5H in.
Footboard 83W x 21H in.
Overall length 90.5 in.
Bottom of side rails to floor 3.75 in.
Bottom of box springs to floor 9.75 in.
Consists of:
134HB Headboard
134FB Footboard
134SR Side Rails/Support 6/6 King
Shown on pages: 2, 10 and 11

**552-135C Barcelona Panel Bed
6/0 California King**

83W x 94.5L x 68.5H in.
Wood framed padded upholstered headboard, footboard and side rails with decorative nailhead trim. Intricate shell carving on headboard. Plinth base footboard on bun feet.
Available only in standard fabric 110211 Clarendon: A woven linen pattern in a winter wheat coloration
Headboard 81.5W x 68.5H in.
Footboard 83W x 21H in.
Overall length 94.5 in.
Bottom of side rails to floor 3.75 in.
Bottom of box springs to floor 9.75 in.
Consists of:
135HB Headboard
135FB Footboard
135SR Side Rails/Support
6/0 California King



**552-173C Candaleria Poster Bed
5/0 Queen**

65.25W x 90.5L x 92.75H in.
in high post position
65.25W x 90.5L x 66.25H in.
in low post position
Graceful turned posts separate for high/low headboard and footboard post options (includes 2 sets of finials, one set to be used when posts are in high position and the other set to be used when posts are in low position), cathedral mahogany veneers; removable metal canopy in a textured aged-iron finish.
Headboard 65.25W x 92.75H in.
in high position; panel 66.25H in.
Headboard 65.25W x 66.25H in.
in low position; post 62.25H in.
Footboard 65.25W x 92.75H in.
in high position
Footboard 65.25W x 35.5H in.
in low position
Bottom of side rails to floor 5.5 in.
Bottom of box springs to floor 7.25 in.
Consists of:
173HB Headboard
173FB Footboard
173SRCF Side Rails/Support/
Canopy Frame 5/0 Queen

**552-174C Candaleria Poster Bed
6/6 King**

81.75W x 90.5L x 92.75H in.
in high post position
81.75W x 90.5L x 68.75H in.
in low post position
Graceful turned posts separate for high/low headboard and footboard post options (includes 2 sets of finials, one set to be used when posts are in high position and the other set to be used when posts are in low position), cathedral mahogany veneers; removable metal canopy in a textured aged-iron finish.
Headboard 81.75W x 92.75H in.
in high position; panel 68.75H in.
Headboard 81.75W x 68.75H in.
in low position; post 62.25H in.
Footboard 81.75W x 92.75H in.
in high position
Footboard 81.75W x 35.5H in.
in low position
Bottom of side rails to floor 5.5 in.
Bottom of box springs to floor 7.25 in.
Consists of:
174HB Headboard
174FB Footboard
174SRCF Side Rails/Support/
Canopy Frame 6/6 King
Shown on pages: 4, 5, 6 and 7

**552-175C Candaleria Poster Bed
6/0 California King**

81.75W x 94.5L x 92.75H in.
in high post position
81.75W x 94.5L x 68.75H in.
in low post position
Graceful turned posts separate for high/low headboard and footboard post options (includes 2 sets of finials, one set to be used when posts are in high position and the other set to be used when posts are in low position), cathedral mahogany veneers; removable metal canopy in a textured aged-iron finish.
Headboard 81.75W x 92.75H in.
in high position; panel 68.75H in.
Headboard 81.75W x 68.75H in.
in low position; post 62.25H in.
Footboard 81.75W x 92.75H in.
in high position
Footboard 81.75W x 35.5H in low position
Bottom of side rails to floor 5.5 in.
Bottom of box springs to floor 7.25 in.
Consists of:
174HB Headboard
174FB Footboard
175SRCF Side Rails/Support/
Canopy Frame 6/0 California King



552-201 Helena Round Mirror

44.25 inch diameter
Plate 29 inch diameter; 1.25 inch bevel
Mahogany frame with hammered antique copper inserts.
Shown on pages: 18, 19, 22 and 25



552-205 Landsdowne Landscape Mirror

51W x 36H in.
Plate 40.5W x 25.5H; 1.25 inch bevel
Mahogany frame.
Can be used vertically or horizontally
Shown on pages: 13 and 33



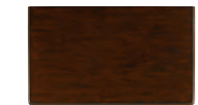
552-233 Pennington Dresser

70.25W x 20.5D x 42.75H in.
Turned inset posts on radius corners; dentil molding under top frame; plinth base on bun feet; 9 drawers (top center drawer has drop-front for media components); grommets for wire management.
Will accommodate the **9000-1-BL Sligh StrongArm® TV Mount**
Shown on page: 13



552-307 Vickers Chest

50.25W x 20.5D x 55.25H in.
Turned inset posts on radius corners; dentil molding under top frame; plinth base on bun feet; 6 drawers.
Shown on page: 8



552-621 Newland Nightstand

32.25W x 19.25D x 32H in.
Turned inset posts on radius corners; dentil molding under top frame; plinth base on bun feet; 3 drawers.
Shown on pages: 2, 10, 11 and 12



552-622 Christiana Nightstand
25W x 18D x 30.5H in.
Turned legs; 1 drawer; 2 shelves;
finished back.
SOME ASSEMBLY REQUIRED
Shown on page: 12



552-624 Valhalla Bachelor's Chest
44.25W x 19.25D x 36H in.
Dentil molding under top frame;
plinth base on bun feet; 6 drawers.
Shown on pages: 4, 6, 7, 9 and 50

DINING ROOM



552-852 Senegal Buffet
72.25W x 20.25D x 39H in.
3 hammered antique copper inserts on top;
3 intricately carved doors; turned inset
posts on radius corners; dentil molding
under top frame; plinth base on bun feet;
3 full-extension felt lined drawers (center
drawer has silver divider); 2 adjustable
shelves behind left side facing and center
doors; 2 adjustable shelves behind right
side facing door.
Shown on pages: 18 and 19



552-869 Cipriana Sideboard
72W x 21D x 37H in.
3 hammered antique copper inserts on
breakfront top; 2 intricately carved doors;
turned legs; 1 adjustable shelf behind each
door; 2 felt lined drawers, top drawer has
silver divider; 1 shelf on bottom of case.
SOME ASSEMBLY REQUIRED
Shown on pages: 24 and 25



**552-875C Maracaibo
Round Dining Table**
60 diameter x 30H in.
Extends to 82 inch oval with
(1) 22 inch leaf
Bottom of apron to floor 26 in.
Radial matched mahogany veneers with
quartered mahogany veneer border and
ebony line; urn pedestal; extension leaf
features flat cut mahogany veneers with
quartered mahogany border and ebony line.
Consists of:
875T Table Top
875B Table Base
SOME ASSEMBLY REQUIRED
Shown on pages: 20, 21, 22, 23 and 49



**552-877C Expedition
Rectangular Dining Table**
84W x 46D x 30H in.
Extends to 120 inches
with (2) 18 inch leaves
Bottom of apron to floor 25.75
Four-way matched mahogany veneers
with quartered mahogany veneer border
and ebony line; carved trestle base with
stretcher; dentil molding under top
frame; extension leaves feature flat cut
mahogany veneers with quartered
mahogany border and ebony line.
Consists of:
877T Table Top
877B Table Base
SOME ASSEMBLY REQUIRED
Shown on pages: 14, 15 and 17



**552-880-01 Cape Verde
Upholstered Side Chair**
Chair ships assembled
20.25W x 27.5D x 41.5H in.
Seat 20.25W x 20D x 19H in.
Upholstered seat and inside back with
inset outside back. Double row of
decorative nailhead trim around seat and
outside back. Single row of decorative
nailhead trim around inside back;
turned front legs.
Available only in standard fabric 110211
Clarendon: A woven linen pattern in a
winter wheat coloration
Shown on pages: 14, 15, 16, 17, 22 and 23

**552-880 Cape Verde
Upholstered Side Chair**
Chair ships assembled
20.25W x 27.5D x 41.5H in.
Seat 20.25W x 20D x 19H in.
Upholstered seat and inside back with
inset outside back. Double row of
decorative nailhead trim around seat and
outside back. Single row of decorative
nailhead trim around inside back;
turned front legs.
Available in COM, Lexington Upholstery
fabrics or a combination of any two to
five fabrics. If no fabric is specified,
chair will ship in the standard cover.
Fabrics with a repeat in excess of 28"
will require 20% additional yardage.
This chair is also available in leather as
LL1210-12. Please refer to the upholstery
section of tbfurniture.com.



**552-881-01 Cape Verde
Upholstered Arm Chair**
Chair ships assembled
26.25W x 29.25D x 41.5H in.
Arm 24.5H in.
Seat 21.5W x 20D x 19H in.
Upholstered seat and inside back with
inset outside back. Double row of
decorative nailhead trim around seat
and outside back. Single row of
decorative nailhead trim around inside
back; turned front legs; carved arms.
Available only in standard fabric 110211
Clarendon: A woven linen pattern in a
winter wheat coloration
Shown on pages: 15, 17, 22 and 23

**552-881 Cape Verde
Upholstered Arm Chair**
Chair ships assembled
26.25W x 29.25D x 41.5H in.
Arm 24.5H in.
Seat 21.5W x 20D x 19H in.
Upholstered seat and inside back with
inset outside back. Double row of
decorative nailhead trim around seat and
outside back. Single row of decorative
nailhead trim around inside back;
turned front legs.
Available in COM, Lexington Upholstery
fabrics or a combination of any two to five
fabrics. If no fabric is specified, chair will
ship in the standard cover. Fabrics with
a repeat in excess of 28" will require 20%
additional yardage.
This chair is also available in leather as
LL1210-13. Please refer to the upholstery
section of tbfurniture.com.
Shown on Front Cover and pages 20 and 21



**LL1210-12 Jacqueline Leather
Hostess Dining Chair**
20.25W x 27.5D x 41.5H in.
Seat: 19H in.
Inside: 20D in.
Standard Seat: Tight
Standard Back: Tight
Standard Feature: #32 Nailhead Trim
Standard Finish:
Available only as shown - Tangier
Shown in 9617-71 Gr. 3, Contrast Inside
and Outside Back in 6290-71 Gr. 5,
#1 Nailhead Trim, finish Available
only as shown - Tangier
Shown on pages: 18 and 50



**LL1210-13 Jacqueline Leather
Host Dining Chair**
26.25W x 29.25D x 41.5H in.
Arm: 24.5H in., Seat: 19H in.
Inside: 21.5W x 20D in.
Standard Seat: Tight
Standard Back: Tight
Standard Feature: #32 Nailhead Trim
Standard Finish:
Available only as shown - Tangier
Shown in 9621-71 Gr. 5, Contrast Inside
Back, Outside Back and Seat Cushion Top
in 5785-71 Gr. 5, #1 Nailhead Trim, finish
Available only as shown - Tangier
Shown on page: 51
Shown in 9617-71 Gr. 3, Contrast Inside
and Outside Back in 6290-71 Gr. 5,
#1 Nailhead Trim, finish Available
only as shown - Tangier
Shown on page: 18

LIVING ROOM



552-943 Monrovia Octagonal Cocktail Table
50W x 50D x 19.5H in.
16 piece radial matched mahogany veneer top; metal base and stretcher in a textured aged-iron finish.
Shown on pages: 27, 29 and 43



552-947 Kirkwood Rectangular Cocktail Table
56W x 36D x 16.75H in.
Four-way matched mahogany veneers with quartered mahogany veneer border and ebony line; dentil molding under top frame; decorative turned legs.
SOME ASSEMBLY REQUIRED
Shown on pages: 38 and 39



552-950 Crawford Storage Lamp Table
23W x 27D x 24H in.
Flat cut mahogany veneers with quartered mahogany border and ebony line on top; 1 adjustable shelf behind a intricately carved door.
Shown on page: 55



552-951 Queenstown Round Accent Table
16 diameter x 23H in.
Wood framed top with hammered antique copper insert; textured aged iron finished metal post sits on a wood pedestal.
Shown on pages: 26, 46, 47 and 53



552-952 Harcourt Round Side Table
20 diameter x 24.5H in.
Reversible lift top. One side has a wood framed hammered antique copper insert with nailhead trim. The reverse side has mahogany and ebony veneer creating a checkerboard game pattern. The perimeter is clad with hammered antique copper and decorative nailhead trim.
Shown on pages: 38, 39, 41, 44, 45 and 52



552-953 Carman End Table
22W x 25.25D x 24H in.
Four-way matched mahogany veneers with quartered mahogany veneer border and ebony line; dentil molding under top frame; turned legs; 2 shelves.
SOME ASSEMBLY REQUIRED
Shown on pages: 43 and 55



552-954 Siliana Triangle Table
27W x 23.75D x 24H in.
Dentil molding under top frame; turned legs; 2 shelves.
SOME ASSEMBLY REQUIRED
Shown on pages: 38 and 40



552-955 Tunis Box-on-Stand
18.75W x 23.75D x 25H in.
2 drawers with hammered antique copper fronts and decorative nailhead trim; turned legs; finished back.
SOME ASSEMBLY REQUIRED
Shown on page: 37



552-966 Mossel Bay Console Table
68W x 20.25D x 32.25H in.
Mahogany veneers with quartered mahogany veneer border and ebony line; canted corners; dentil molding under top frame; turned legs; 1 shelf.
SOME ASSEMBLY REQUIRED
Shown on pages: 22, 33 and 51

UPHOLSTERY



1667-11 San Carlos Chair
31W x 36.5D x 37H in.
Arm: 22.5H in., Seat: 16.5H in.
Inside: 23.5W x 22D in.
Standard Seat: Tight
Standard Back: Tight
Standard Features: One 24 x 12" Kidney Pillow, #1 Nailhead Trim, Old Brass Casters on Front Legs
Standard Finish: Sumatra
Shown in 4033-71 Gr. 2, one 24 x 12" Kidney Pillow in 4100-31 Gr. 3 with Fringe 892-11, #1 Nailhead Trim, finish Tangier
Shown on pages: 10, 46 and 48

Also Available
LL1667-11 San Carlos Leather Chair



1761-11 Hamilton Chair
41W x 40D x 38.5H in.
Arm: 28H in., Seat: 19H in.
Inside: 25W x 24D in.
Standard Seat Cushion: Ultra Down
Standard Back Cushion: Blend Down
Standard Feature:
One 18" Blend Down Throw Pillow
Standard Finish: Available only as shown
Shown in 6299-71 Gr. 5, one 18" Throw Pillow in 0138-45 Gr. 3 with Cord 908-71, finish Available only as shown - Plantation
Shown on pages: 30 and 31



1764-33 Hewett Sofa
91.5W x 42D x 42H in.
Arm: 27H in., Seat: 20.5H in.
Inside: 82.5W x 20D in.
Standard Seat Cushions: Ultra Down
Standard Back: Tight
Standard Features: Five 24" Blend Down Throw Pillows, #1 Nailhead Trim
Standard Finish: Tangier
Shown in 4095-71 Gr. 3, three 24" Throw Pillows in 6290-71 Gr. 5 with Fringe 756-21, two 24" Throw Pillows in 5870-71 Gr. 3 with Welt in 4930-45 Gr. 3, #1 Nailhead Trim, finish Tangier
Shown on pages: 26, 27, 28 and 47



7204-11 Marissa Wing Chair
Shown in 6292-31 Gr. 7, Contrast Body Welt in 4678-31 Gr. 2, #1 Nailhead Trim, finish Tangier
Shown on page: 39



7274-11 Bishop Chair
33W x 38.5D x 36H in.
Arm: 24H in., Seat: 19H in.
Inside: 22W x 21.5D in.
Standard Seat Cushion: Ultra Down
Standard Back Cushion: Blend Down
Standard Feature: #1 Nailhead Trim
Standard Finish: Tangier
Pillow shown not standard
Shown in 5874-71 Gr. 4, #1 Nailhead Trim, finish Tangier
Shown on pages: 34 and 35

Also Available
LL7274-11 Bishop Leather Chair



7204-11 Marissa Wing Chair
36W x 38D x 44H in.
Arm: 26H in., Seat: 19.5H in.
Inside: 22W x 23D in.
Standard Seat Cushion: Ultra Down
Standard Back: Tight
Standard Feature: #1 Nailhead Trim
Standard Finish: Canyon
Shown in 6291-71 Gr. 9, Contrast Body Welt in 0138-43 Gr. 3, #1 Nailhead Trim, finish Tangier
Shown on pages: 33 and 55

Also Available
LL7204-11 Marissa Leather Wing Chair
LL1841-11 Marissa Leather Wing Chair

7274-44 Bishop Ottoman
27.5W x 22D x 19H in.
Seat: 17.5H in.
Standard Seat Cushion: Ultra Down
Standard Feature: #1 Nailhead Trim
Standard Finish: Tangier
Shown in 5874-71 Gr. 4, #1 Nailhead Trim, finish Tangier
Shown on page 35

Also Available
LL7274-44 Bishop Leather Ottoman



7275-11 Amelia Chair
 36W x 40.5D x 36H in.
 Arm: 24H in., Seat: 19H in.
 Inside: 24.5W x 24.5D in.
 Standard Seat Cushion: Ultra Down
 Standard Back Cushion: Blend Down
 Standard Feature: #1 Nailhead Trim
 Standard Finish: Tangier
 Shown in 4097-11 Gr. 2, #1 Nailhead Trim,
 finish Tangier
Shown on page: 41

Also Available

LL7275-11 Amelia Leather Chair
LL7275-11AA Amelia Leather Chair

7275-44 Amelia Ottoman
 30W x 22D x 19H in.
 Seat: 17H in.
 Standard Finish: Tangier
 Shown in 4097-11 Gr. 2, #1 Nailhead Trim,
 finish Tangier
Shown on page 41

Also Available

LL7275-44 Amelia Leather Ottoman



7275-33 Amelia Sofa
 86.5W x 40.5D x 36H in.
 Arm: 24H in., Seat: 19H in.
 Inside: 75W x 24.5D in.
 Standard Seat Cushions: Ultra Down
 Standard Back Cushions: Blend Down
 Standard Features: Two 22" Throw
 Pillows, two 20" Throw Pillows,
 #1 Nailhead Trim
 Standard Finish: Tangier
 Shown in 4070-11 Gr. 3, two 22" Throw
 Pillows in 6290-71 Gr. 5 with Fringe
 756-21, two 20" Throw Pillows in 5870-71
 Gr. 3 with Cord 758-21, #1 Nailhead Trim,
 finish Tangier
Shown on pages: 43 and 67

Also Available

7275-33AA Amelia Sofa
LL7275-33 Amelia Leather Sofa



7275-33AA Amelia Sofa
 86.5W x 40.5D x 36H in.
 Arm: 24H in., Seat: 19H in.
 Inside: 75W x 24.5D in.
 Standard Seat Cushions: Ultra Down
 Standard Back Cushions: Blend Down
 Standard Features: Two 22" Throw
 Pillows, two 20" Lux Down Throw Pillows,
 #1 Nailhead Trim
 Standard Finish: Available only as shown
 - Tangier

Available only as shown
 Shown in 4097-11 Gr. 2, two 22"
 Throw Pillows - One Side in 6994-31/
 One Side in 4930-12 Gr. 3 with Fringe
 984-31, two 20" Throw Pillows in 5872-31
 Gr. 5 with Cord 985-31, #1 Nailhead Trim,
 finish Available only as shown - Tangier
*Shown with extra throw pillow on Back Cover
 and page 38; Shown standard on page 40*

Also Available

7275-33 Amelia Sofa
LL7275-33 Amelia Leather Sofa



7876-11 Kent Chair
 41W x 42.5D x 36.5H in.
 Arm: 21H in., Seat: 17.5H in.
 Inside: 23.5W x 25.5D in.
 Standard Seat Cushion: Ultra Down
 Standard Back Cushion: Blend Down
 Standard Finish: Windsor
 Shown in 6319-71 Gr. 10, Contrast Leather
 Welt on Seat and Back Cushion in
 9617-71 Gr. 3, finish Tangier
Shown on page: 54

Also Available

LL7876-11 Kent Leather Chair
7876-11AA Kent Chair
LL7876-11AA Kent Leather Chair



7900-44 Heather Cocktail Ottoman
 49W x 49D x 21H in.
 Seat: 19.5H in.
 Standard Seat: Tufted
 Standard Features: #2 Nailhead Trim,
 Removable center tray
 Standard Finish:
 Available only as shown - Tangier
 Shown in 4098-71 Gr. 6, #2 Nailhead Trim,
 finish Available only as shown - Tangier
Shown on page: 34

Also Available

**LL7900-44 Heather Leather
 Cocktail Ottoman**



7932-11 Acappella Chair
 30.5W x 37D x 38.5H in.
 Arm: 24H in., Seat: 16H in.
 Inside: 22.5W x 26D in.
 Standard Seat: Tufted
 Standard Back: Tufted
 Standard Feature: #1 Nailhead Trim
 Standard Finish: Tangier
 Shown in 5826-71 Gr. 3, #1 Nailhead Trim,
 finish Tangier
Shown on page: 53

Also Available

LL7932-11 Acappella Leather Chair



7980-23-02 Sloane Leather Settee
 64.5W x 36D x 35.75H in.
 Arm: 24.5H in., Seat: 18.75H in.
 Inside: 57W x 23.5D in.
 Standard Seat Cushions: Ultra Down
 Standard Back: Tufted
 Standard Feature: #1 Nailhead Trim
 Standard Finish:
 Available only as shown - Mesa
 Available only as shown - Shown in
 9621-71 Gr. 5, #1 Nailhead Trim,
 finish Available only as shown - Mesa
Shown on pages: 42 and 45

Also Available

7980-23 Sloane Settee
LL7980-23 Sloane Leather Settee



7998-11 Riversdale Chair
 46W x 41D x 35H in.
 Arm: 25.5H in., Seat: 19H in.
 Inside: 23.5W x 22D in.
 Standard Seat Cushion: Ultra Down
 Standard Back Cushion: Blend Down
 Standard Feature: #1 Nailhead Trim
 Standard Finish: Tangier
 Shown in 4200-71 Gr. 4, #1 Nailhead Trim,
 finish Tangier
Shown on page: 36

Also Available

7998-44 Riversdale Ottoman
 32.5W x 25.5D x 18.5H in.
 Seat: 16.5H in.
LL7998-11 Riversdale Leather Chair
7998-11-01 Riversdale Leather Chair



7998-33 Riversdale Sofa
 98W x 42.5D x 35H in.
 Arm: 25.5H in., Seat: 19H in.
 Inside: 75.5W x 23.5D in.
 Standard Seat Cushions: Ultra Down
 Standard Back Cushions: Blend Down
 Standard Features: Two 22" Blend Down
 Throw Pillows, two 20" Throw Pillows,
 #1 Nailhead Trim
 Standard Finish: Tangier
 Shown in 4200-71 Gr. 4, two 22"
 Throw Pillows in 4098-71 Gr. 2 with
 Fringe 907-71, two 20" Throw Pillows
 in 5874-71 Gr. 2 with Cord 908-71,
 #1 Nailhead Trim, finish Tangier
Shown on pages: 30 and 32

Also Available

LL7998-33 Riversdale Leather Sofa
7998-33-01 Riversdale Leather Sofa



7998-11-01 Riversdale Leather Chair
 46W x 41D x 35H in.
 Arm: 25.5H in., Seat: 19H in.
 Inside: 23.5W x 22D in.
 Standard Seat Cushion: Ultra Down
 Standard Back Cushion: Blend Down
 Standard Feature: #1 Nailhead Trim
 Standard Finish:
 Available only as shown -Tangier
 Available only as shown - Shown in 9621-71
 Gr. 5, #1 Nailhead Trim, finish Available
 only as shown - Tangier
Shown on page 52

Also Available

7998-11 Riversdale Chair
LL7998-11 Riversdale Leather Chair
7998-44-01 Riversdale Leather Ottoman
 32.5W x 25.5D x 18.5H in.
 Seat: 16.5H in.
 Standard Seat Cushion: Ultra Down
 Standard Feature: #1 Nailhead Trim
 Standard Finish:
 Available only as shown - Tangier
 Available only as shown - Shown in 9621-71
 Gr. 5, #1 Nailhead Trim, finish Available
 only as shown - Tangier
Shown on page: 52
Also Available
7998-44 Riversdale Ottoman
LL7998-44 Riversdale Leather Ottoman



7998-33-01 Riversdale Leather Sofa
 98W x 42.5D x 35H in.
 Arm: 25.5H in., Seat: 19H in.
 Inside: 75.5W x 23.5D in.
 Standard Seat Cushions: Ultra Down
 Standard Back Cushions: Blend Down
 Standard Feature: #1 Nailhead Trim
 Standard Finish:
 Available only as shown - Tangier
 Available only as shown - Shown in 9621-71
 Gr. 5, #1 Nailhead Trim, finish Available
 only as shown - Tangier, Throw Pillows
 shown are not standard on this frame -
 Additional two 20" Throw Pillows in
 5875-71 Gr. 4 with Cord 908-71,
 Additional two 20" Throw Pillows in
 6299-71 Gr. 5 with Fringe 907-71
Shown on pages: 34 and 36

Also Available

7998-33 Riversdale Sofa
LL7998-33 Riversdale Leather Sofa



LL7274-11 Bishop Leather Chair
 33W x 38.5D x 36H in.
 Arm: 24H in., Seat: 19H in.
 Inside: 22W x 21.5D in.
 Standard Seat Cushion: Ultra Down
 Standard Back Cushion: Blend Down
 Standard Feature: #1 Nailhead Trim
 Standard Finish: Tangier
 Shown in 9621-71 Gr. 5, Contrast Seat
 and Back Cushion in 5869-21 Gr. 3,
 #1 Nailhead Trim, finish Tangier
Shown on page: 42

Also Available

LL7274-44 Bishop Leather Ottoman
 27.5W x 22D x 19H in.
 Seat: 17.5H in.
7274-11 Bishop Chair
7274-44 Bishop Ottoman



LL7275-11AA Amelia Leather Chair
 36W x 40.5D x 36H in.
 Arm: 24H in., Seat: 19H in.
 Inside: 24.5W x 24.5D in.
 Standard Seat Cushion: Ultra Down
 Standard Back Cushion: Blend Down
 Standard Feature: #1 Nailhead Trim
 Standard Finish: Tangier
 Available only as shown - Shown in 9613-31
 Gr. 4, one 20" Throw Pillow - One Side in
 6994-31 / One Side in 4930-12 Gr. 3 with
 Cord 985-31, #1 Nailhead Trim, finish
 Available only as shown - Tangier
 Shown on page: 52

Also Available

7275-11 Amelia Chair

LL7275-11 Amelia Leather Chair

LL7275-44 Amelia Leather Ottoman

30W x 22D x 19H in.
 Seat: 17H in.
 Standard Seat Cushion: Ultra Down
 Standard Feature: #1 Nailhead Trim
 Standard Finish: Tangier
 Shown in 9613-31 Gr. 4, #1 Nailhead Trim,
 finish Tangier
 Shown on page: 52

Also Available

7275-44 Amelia Ottoman



**LL7900-44 Heather
 Leather Cocktail Ottoman**

49W x 49D x 21H in.
 Seat: 19.5H in.
 Standard Seat: Tufted
 Standard Features: #2 Nailhead Trim,
 Removable center tray
 Standard Finish:

Available only as shown - Tangier
 Shown in 9482-71 Gr. 6, #2 Nailhead Trim,
 finish Available only as shown - Tangier
 Shown on pages: 30, 31 and 32

Also Available

7900-44 Heather Cocktail Ottoman



LL7932-11 Acappella Leather Chair

30.5W x 37D x 38.5H in.
 Arm: 24H in., Seat: 16H in.
 Inside: 22.5W x 26D in.
 Standard Seat: Tufted
 Standard Back: Tufted
 Standard Feature: #1 Nailhead Trim
 Standard Finish: Tangier
 Shown in 9621-71 Gr. 5, #1 Nailhead Trim,
 finish Tangier
 Shown on pages: 27, 28 and 47

Also Available

7932-11 Acappella Chair



LL7958-44 Bahia Leather Ottoman

45W x 29.5D x 19.5H in.
 Standard Seat: Tight
 Standard Feature: #1 Nailhead Trim
 Standard Finish: Java
 Shown in 9617-71 Gr. 3, #1 Nailhead Trim,
 finish Tangier
 Shown on page: 47

Also Available

7958-44 Bahia Ottoman



**4011-1095-200171
 Henry Link Trading Co.
 Xavier Bench**

22W x 19D x 19.75H in.
 Ships Assembled
 Available only in standard fabric 200071
 - Intricate leopard pattern in
 medium nap velvet
 Shown on pages: 5 and 6

**Tommy Bahama
 HOME**

FURNITURE CARE:

- Avoid prolonged exposure to direct sunlight.
- Do not leave plastic or rubber materials on wood surfaces.
- Wipe up spills immediately.
- Clean with a non-silicone furniture polish, rubbing with the grain.
- Avoid common hazards such as hot dishes (use a protective pad), harsh solvents (nail polish remover, alcohol), and abrasives.

BRASS AND METAL CARE:

- Maintain with regular dusting.
- Wipe up spills immediately.
- Clean with mild soap and water, dry thoroughly. Do not use a brass cleaner (it will damage the lacquer)

UPHOLSTERY CARE:

- See your Lexington Upholstery dealer, visit www.tbfurniture.com, or call 336.474.5300, ext. 2.
- Never remove cushion covers for cleaning
 - Never use bleach or any tumble method of cleaning

CONSTRUCTION NOTE:

In order to provide our customers with the best possible quality and value, this collection includes items or components produced outside the United States.

NOTE TO FURNITURE RETAILERS:

Possession of this catalog does not constitute authority to purchase, and the furnishing of this catalog does not constitute an offer by the Company to sell any of the items contained herein. Lexington Home Brands (LHB) reserves the right to alter specifications or discontinue items at any time without advance notice. All price lists and catalogs remain the property of LHB, and may not be copied or in any way duplicated without the express written consent of LHB, and must be returned, or made available, without cost, to LHB promptly should the relationship be terminated by either party. Failure to observe this restriction may result in termination, legal action or both.

FIND US ON THE WEB:

- [facebook.com/lexington](https://www.facebook.com/lexington)
- [pinterest.com/lexhomebrands](https://www.pinterest.com/lexhomebrands)
- [twitter.com/lexhomebrands](https://www.twitter.com/lexhomebrands)
- [instagram.com/lexhomebrands](https://www.instagram.com/lexhomebrands)
- [houzz.com/user/lexingtonfurniture](https://www.houzz.com/user/lexingtonfurniture)
- [youtube.com/lexingtonfurniture](https://www.youtube.com/lexingtonfurniture)
- [vimeo.com/lexingtonfurniture](https://www.vimeo.com/lexingtonfurniture)



Kilimanjaro



To purchase a Kilimanjaro catalog or locate a dealer in your area,
call 336.474.5444 or visit tbfurniture.com.

Tommy Bahama
HOME

tbfurniture.com